

# Carmen

An Opera by Georges Bizet

We are glad you enjoyed **Play Opera** and learning all about Carmen.



Getting involved with a production is a great introduction to opera and here you can make the lead character's gypsy headdress and maybe stage your own production at home.



## To give you a whistle stop tour of the story:

It was composed by the French composer, Georges Bizet and is one of the most popular operas of all time, even today. Like many of the world's best operas, it explores some big ideas including love, jealousy and passion.

Set in Seville in Spain, Carmen is a gypsy who works in a factory. She is beautiful beyond belief and people are amazed and bewitched by her. She falls in love with a soldier, Don José, but he is engaged to be married to a girl called Micaela from his small, home village. He leaves Micaela for the bewitching Carmen, but then Carmen meets the famous bull fighter Escamillo.

He is like a rock star, and everywhere he goes people call his name and Carmen falls instantly in love with him.

The song you heard Helen perform in Play Opera: the unforgettable 'Habanera' explains how Carmen's 'heart can't be tied down', 'that it is like rebellious bird that none can tame'. She dreams of a 'super star life' with Escamillo; but one day when Carmen is watching a bull fight, Don José waits for her and begs her back. She refuses and they have a terrible fight where Carmen tragically, as our heroine, breaths her last. So ends the story of fiery passion and rivalry.

## Carmen Headdress

### You'll need:

- A printer and printer paper
- Scissors
- Glue
- Thin card (like an empty cereal box)
- Sticky tape



### Print out the PDF files for the flowers and leaves.

You should find four PDFs of images of colourful flowers and leaves and a PDF with templates for the crown fronts.

### If your print-outs are very thin and floppy you can glue the print-outs to pieces of thin card.

Maybe use an empty cereal packet? Ask an adult for help.

### When the glue is dry cut carefully around the flowers, the leaves and the crown front templates.

### Place your cut out flowers and leaves onto your crown front shapes.

Experiment until you're happy with the way your crown looks.

### Use glue or double-sided tape to attach the flowers and leaves to the crown fronts.

Start with the flowers and leaves at the back and layer up.

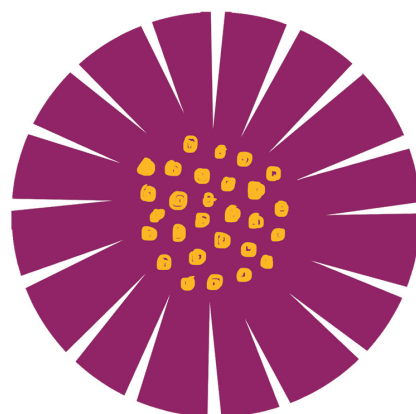
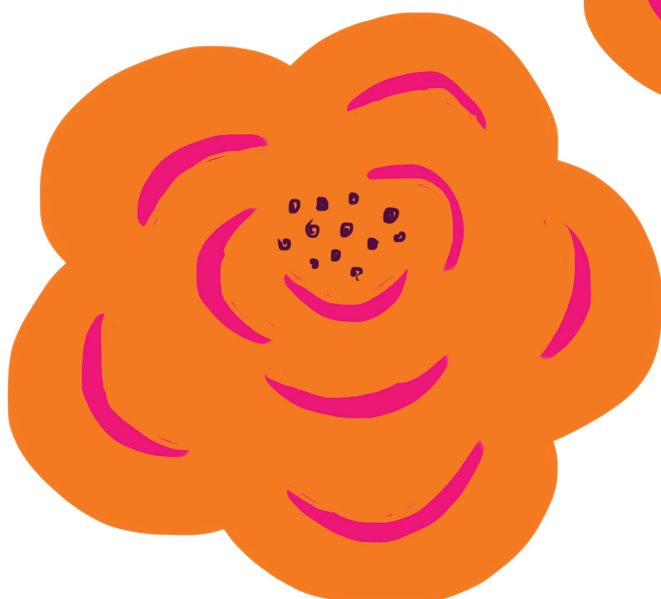
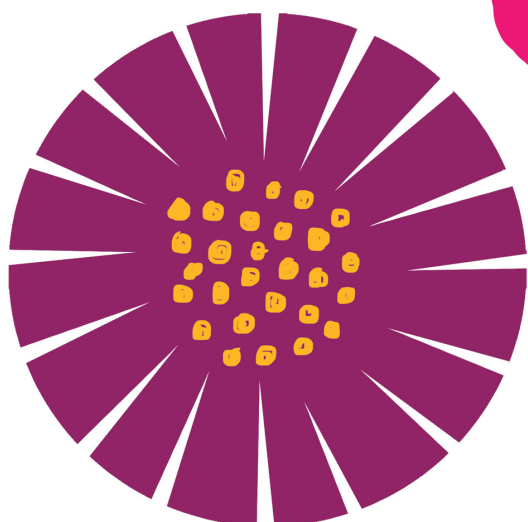
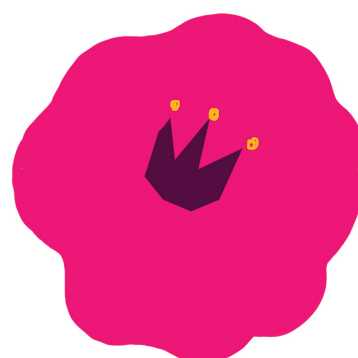
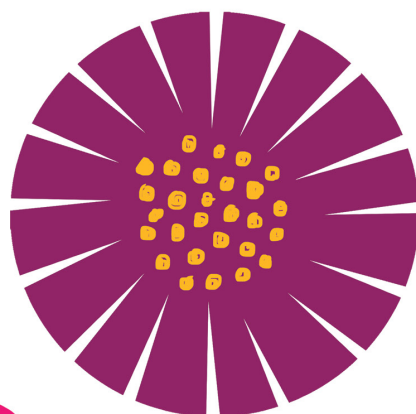
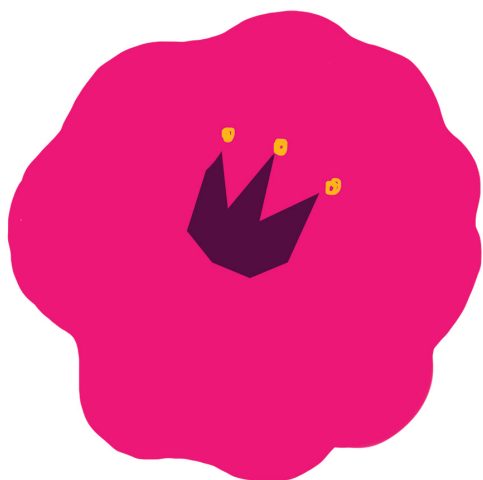
### Cut a suitable length of card (you'll probably have to cut two pieces and tape them together) to make the round crown shape that will sit on your head.

But, before you attach the two ends together, glue or tape your flowers or leaves to the flat length of card.

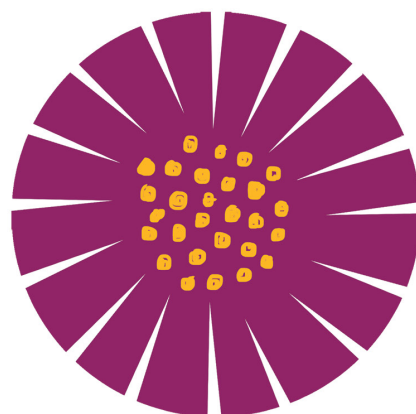
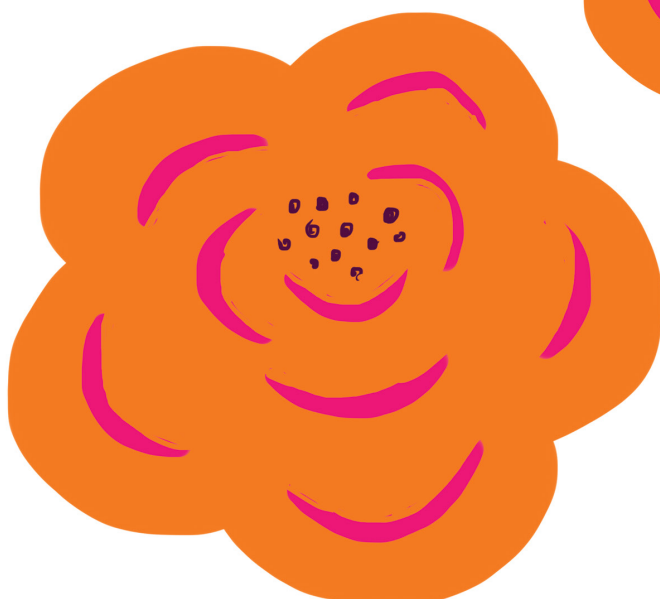
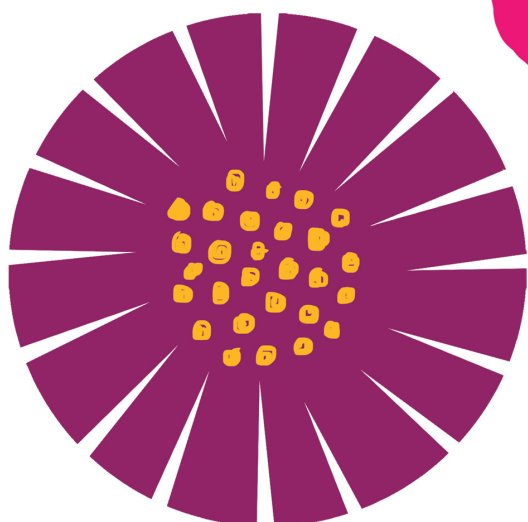
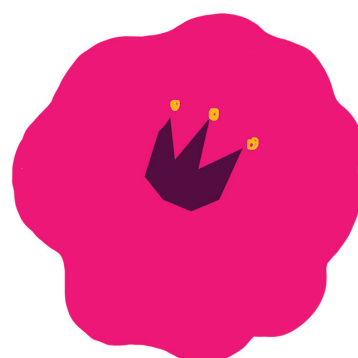
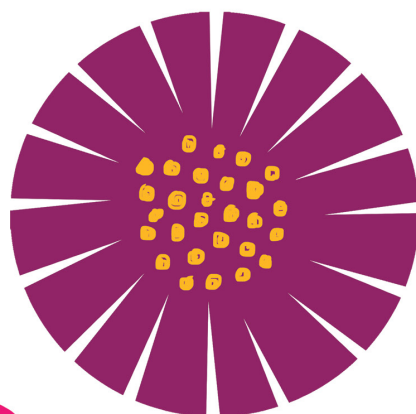
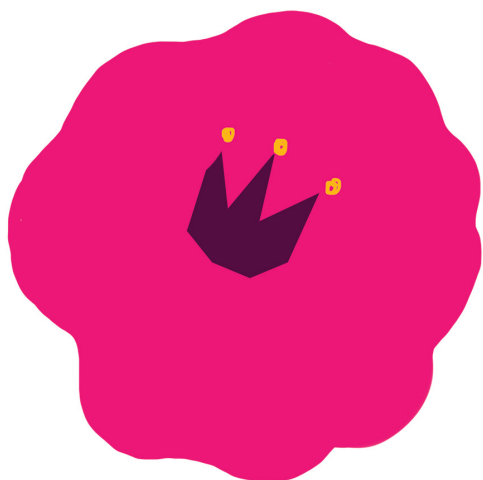
### Finally secure the two ends of the crown with sticky tape so that it fits your head.

Wear with attitude! Maybe put on your own performance?

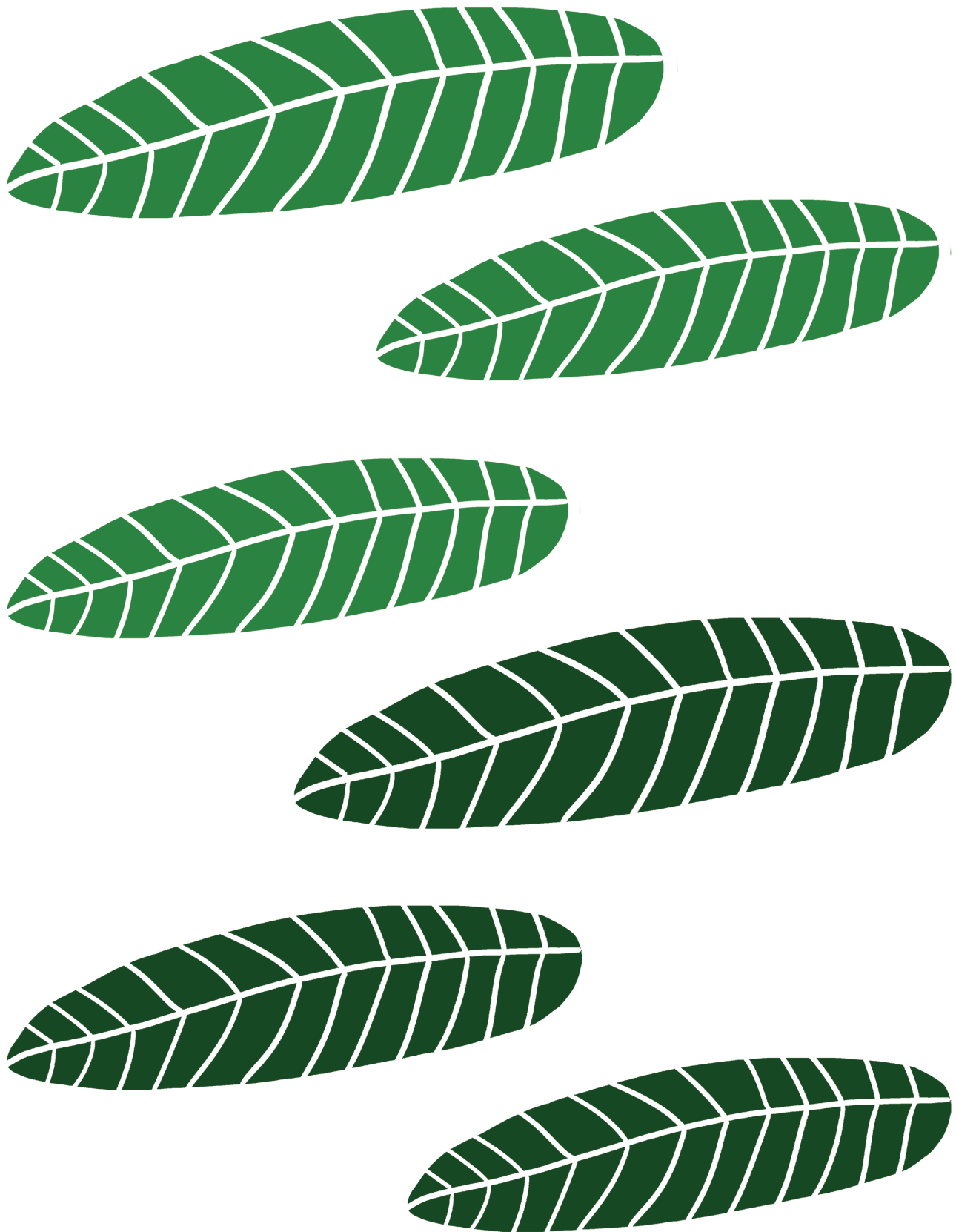




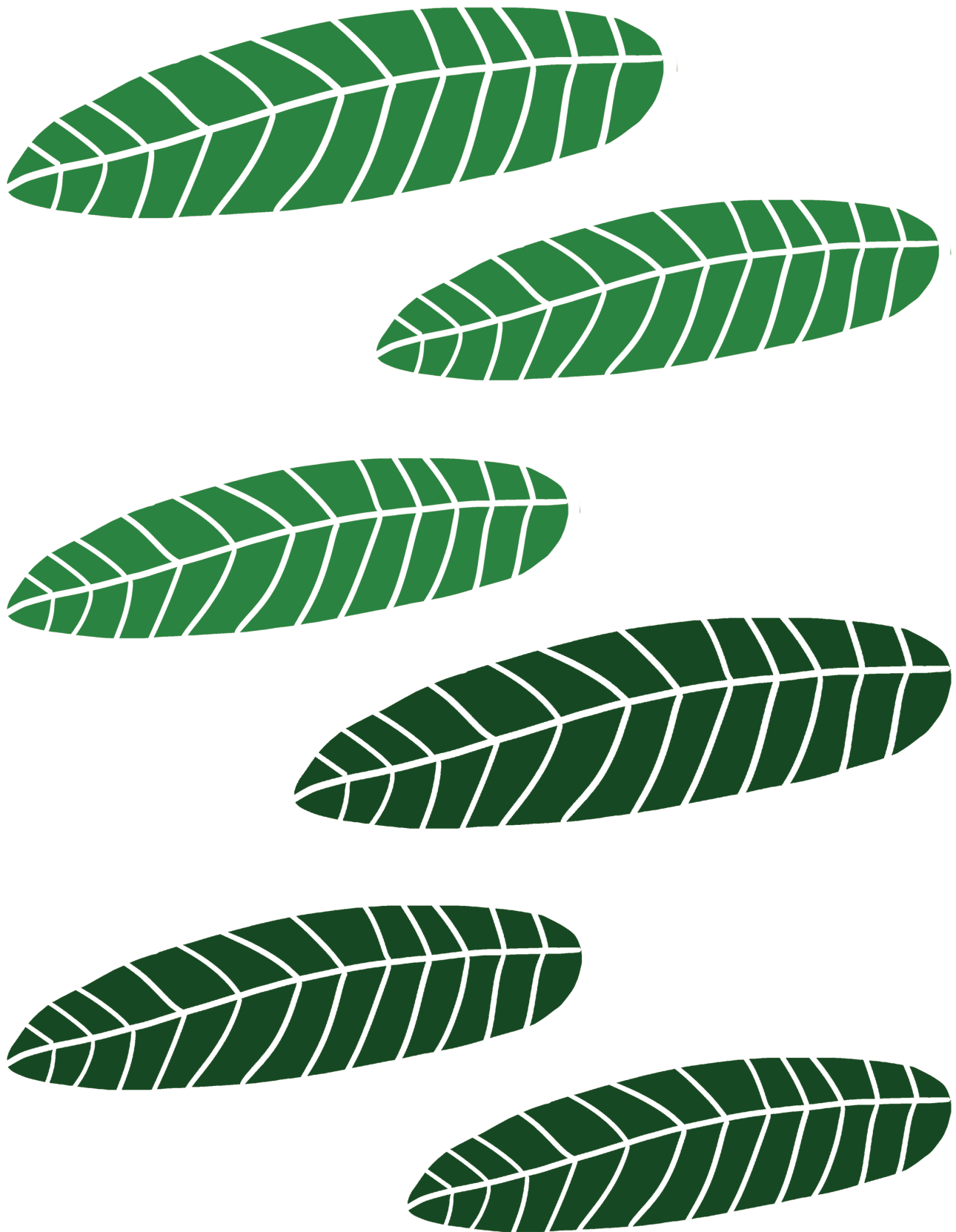
Print out, glue to thin card if necessary, and cut out carefully!



Print out, glue to thin card if necessary, and cut out carefully!



Print out, glue to thin card if necessary, and cut out carefully!



Print out, glue to thin card if necessary, and cut out carefully!



These are templates for your crown fronts.

- Print this page out, glue it to thin card, and cut out the template shapes carefully! Ask an adult for help.
- Next arrange your cut out flowers and leaves onto the crown fronts.
- Once you are happy with how it all looks use glue or double-sided tape to secure your flowers and leaves into place.

Flower crown template

Leaf crown template