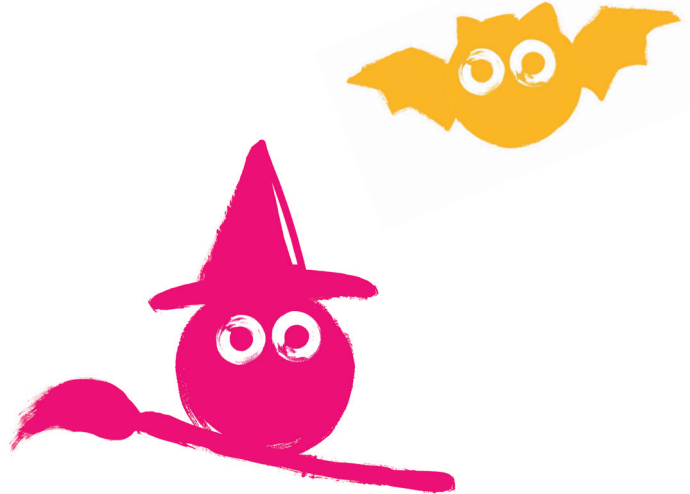


Cat mask

You'll need:

- A printer and printer paper
- Scissors
- Card
- Glue
- Sticky tape
- String, wool or ribbon



Print out the file for the cat mask.

Glue the print-out to pieces of thin card. Maybe use an empty cereal packet? Ask an adult for help.

When the glue is dry cut carefully around the two pieces of the cat mask.

Use glue or tape to attach the two pieces together, so that there are two holes to see through.

Next cut some very thin strips of paper to make whiskers. Glue them carefully to the mask where you think a cat's whiskers should go.

Decide if you want to attach string or wool to your mask to tie around your head or if you'd rather use something like a lollipop stick so that you can hold it up to your face.

Have fun being a cat!





Print out, glue to thin card and cut out carefully!