

Santa's Sleigh

You'll need:

- A printer and printer paper or card
- Scissors
- Glue
- Sticky tape
- Felt pens, pencils or crayons
- Anything you'd like to decorate your sleigh with (ie sticky stars, glitter glue, metallic or gel pens etc)



Print out the file for the sleigh and the file for the Christmas characters.

If the print-outs are on very floppy paper then glue them onto pieces of thin card. It needs to be thin enough to fold. Maybe use an empty cereal packet?

When the glue is dry, cut carefully around the shapes. Make sure you cut the colourful characters, sleigh, sack and harness out in single pieces along with the tabs that sit alongside them. Ask an adult for help, some bits are fiddly.

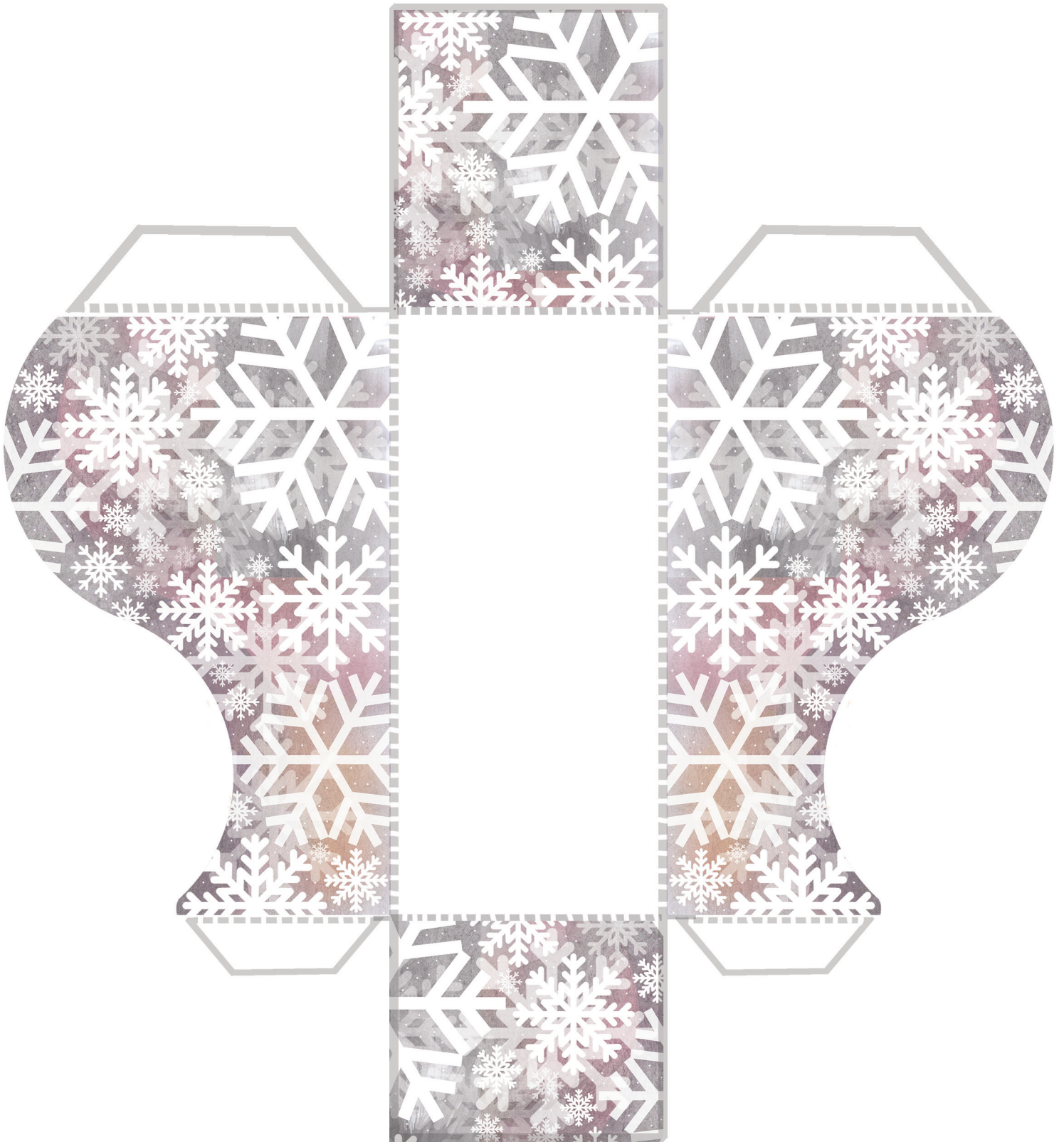
Use your stickers, pencils, or whatever else you have, to decorate and make your cut-outs extra special.

When you've finished, carefully fold your sleigh along the dotted lines and glue it together using the tabs. You will need some help for this.

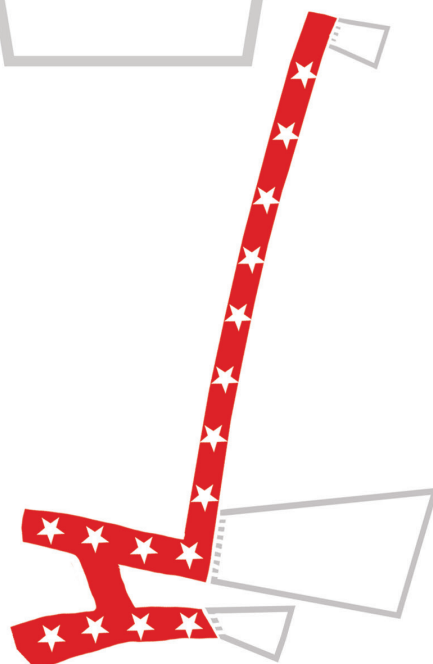
Next fold back the tabs beneath Santa, Rudolph, and the sack of presents. They should all stand up now!

The harness is more fiddly, it has three tabs, one for Santa's hand and two for Rudolph's back. Once the tabs are folded back the harness should sit nicely from Santa's hand along to Rudolph.

Have a very jolly Christmas!



Cut out as one piece, fold back tabs along dotted lines and glue.



Cut out as single pieces and fold back tabs along dotted lines.