

Swan Lake

You'll need:

- A printer and printer paper or card
- Scissors
- Glue or double-sided sticky tape
- A short cardboard tube
- Colouring pencils or pens

Print out the file for the swan parts onto white card or paper. If you use paper, and it's very floppy, you could glue it onto a piece of card, maybe from a cereal box.

Colour in the crown, you could use some craft supplies to decorate it too.

Write the first letter of the name of a person you love on the pink heart, or even their full name, if you can fit it in.

Cut carefully around the shapes. There's a head and neck, two wings, two feet, a heart, and a crown. Ask an adult for help if you need it.

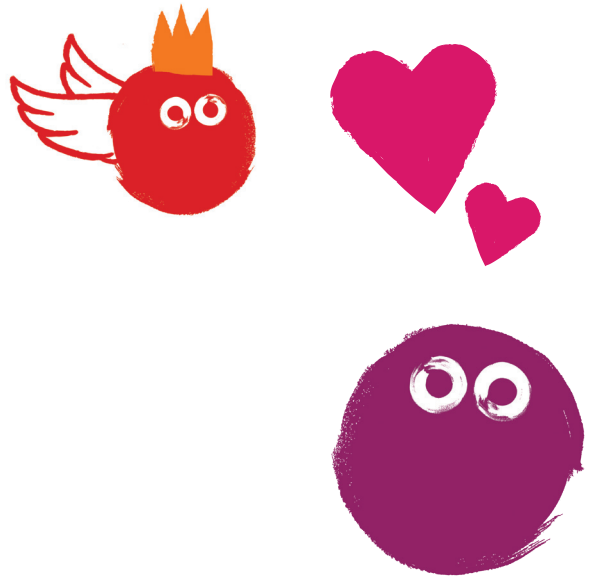
Cut some white paper to the correct size and wrap it around the cardboard tube, securing it with glue or sticky tape, to make the swan's white body.

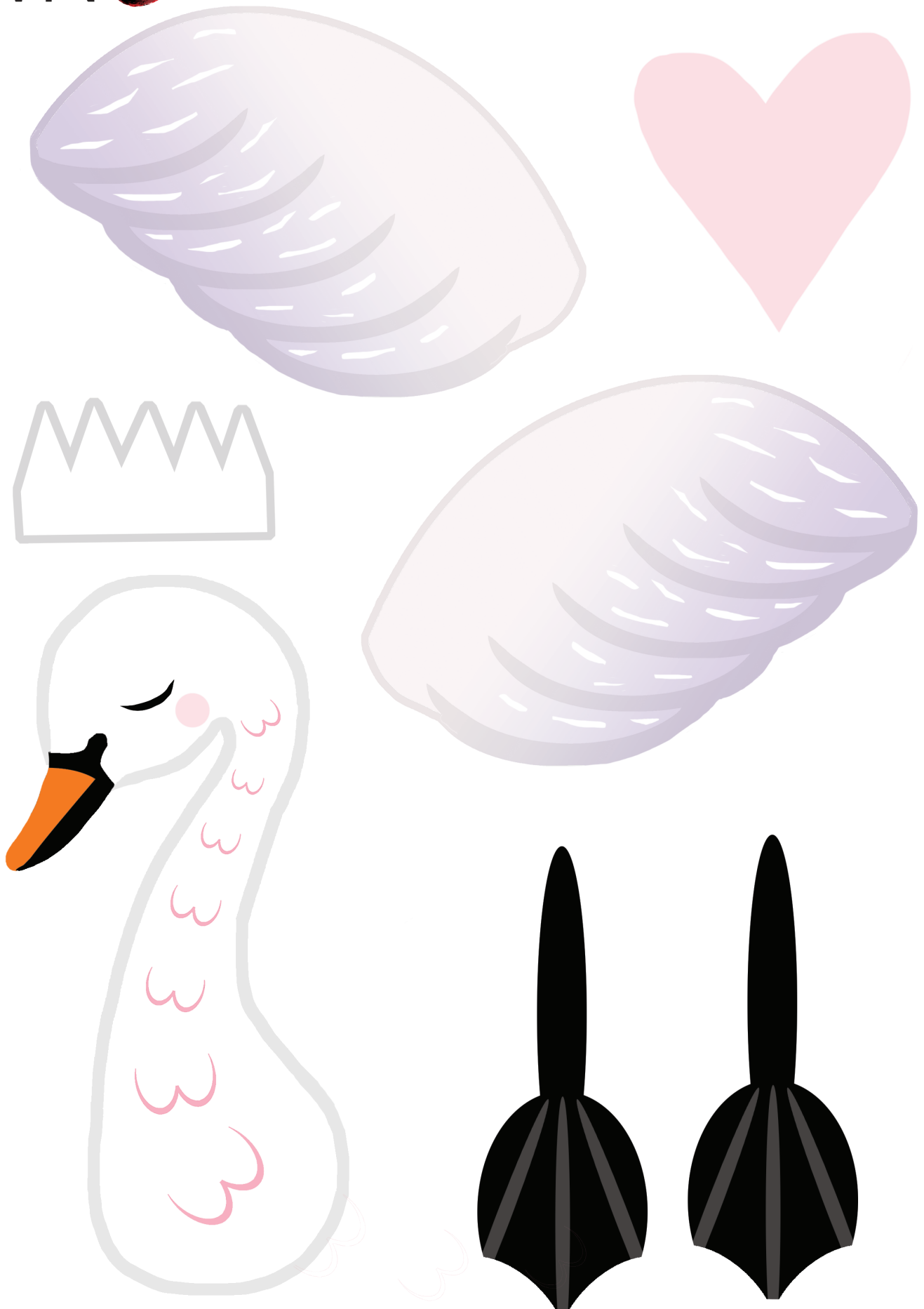
Glue or tape your swan wings to the back of your cardboard tube, with the coloured feather design facing forward.

Next attach the crown to your swan's head and then attach the whole thing to the front of your cardboard tube.

Glue your swan legs to the front of your cardboard tube and then bend the feet upwards to help your swan stand up.

Finally you can attach the heart to one of the swan's wings, or its body, or slot it into the top of the cardboard tube at the back like a secret message!





Print out, glue to thin card and cut out carefully.